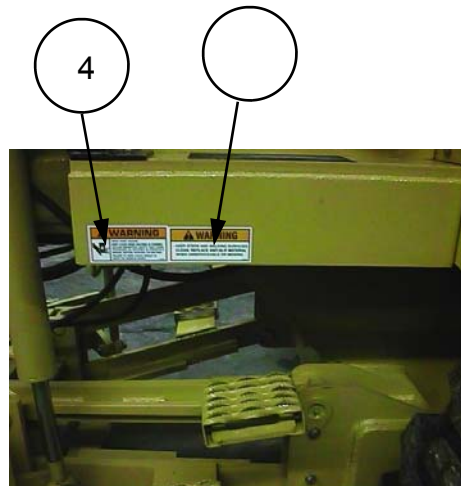
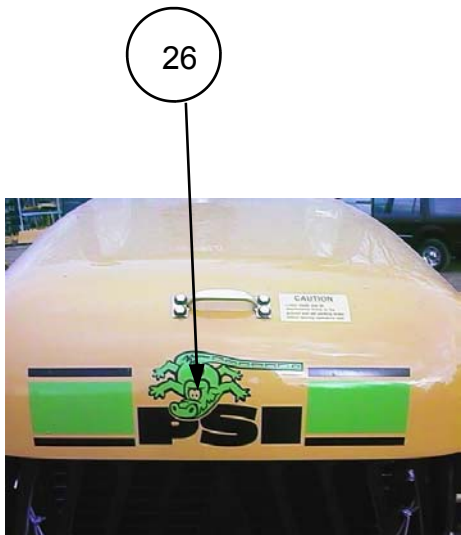
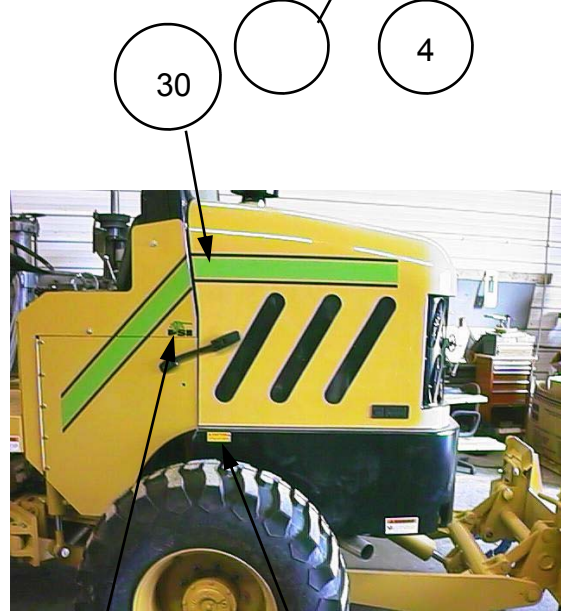
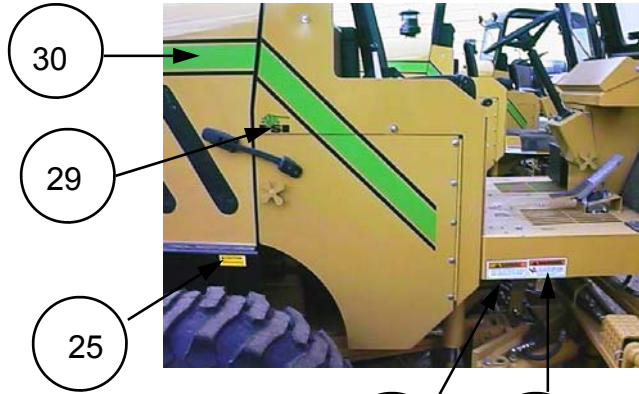
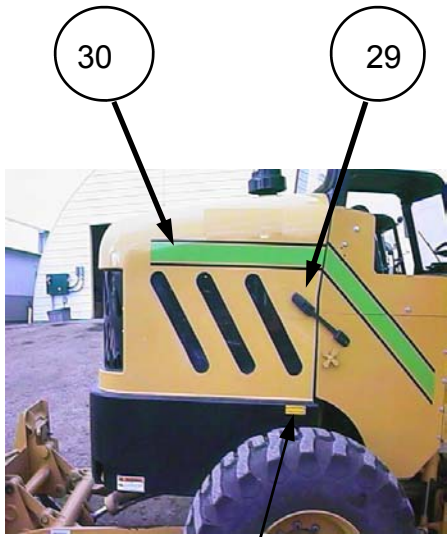


MG618 Parts Manual

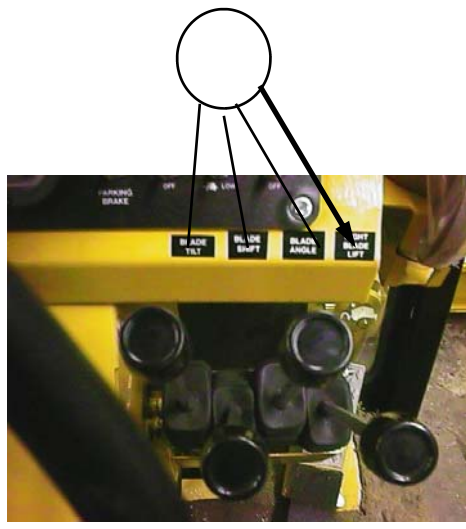
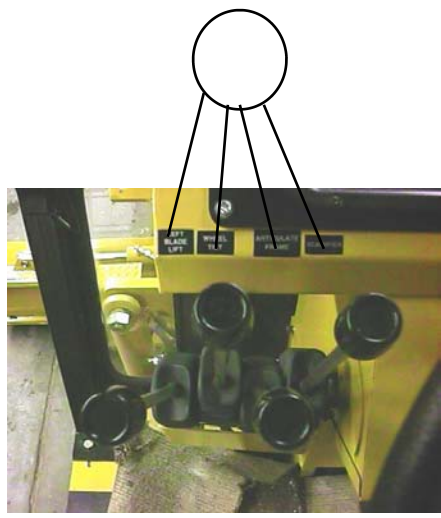
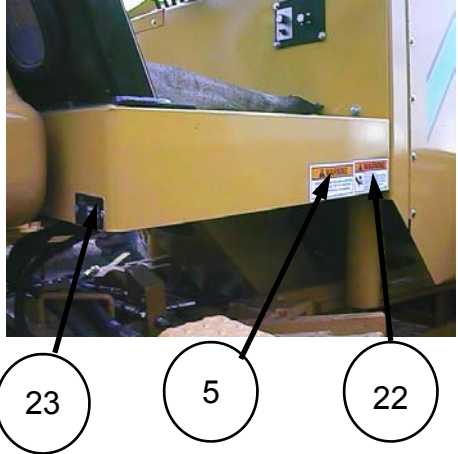
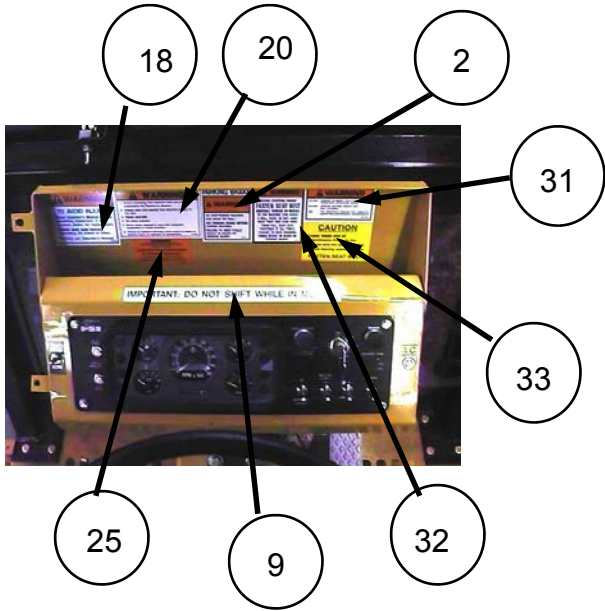
Pavement Services, Inc.





The Decal Kit for the Model MG618 Maintainer is

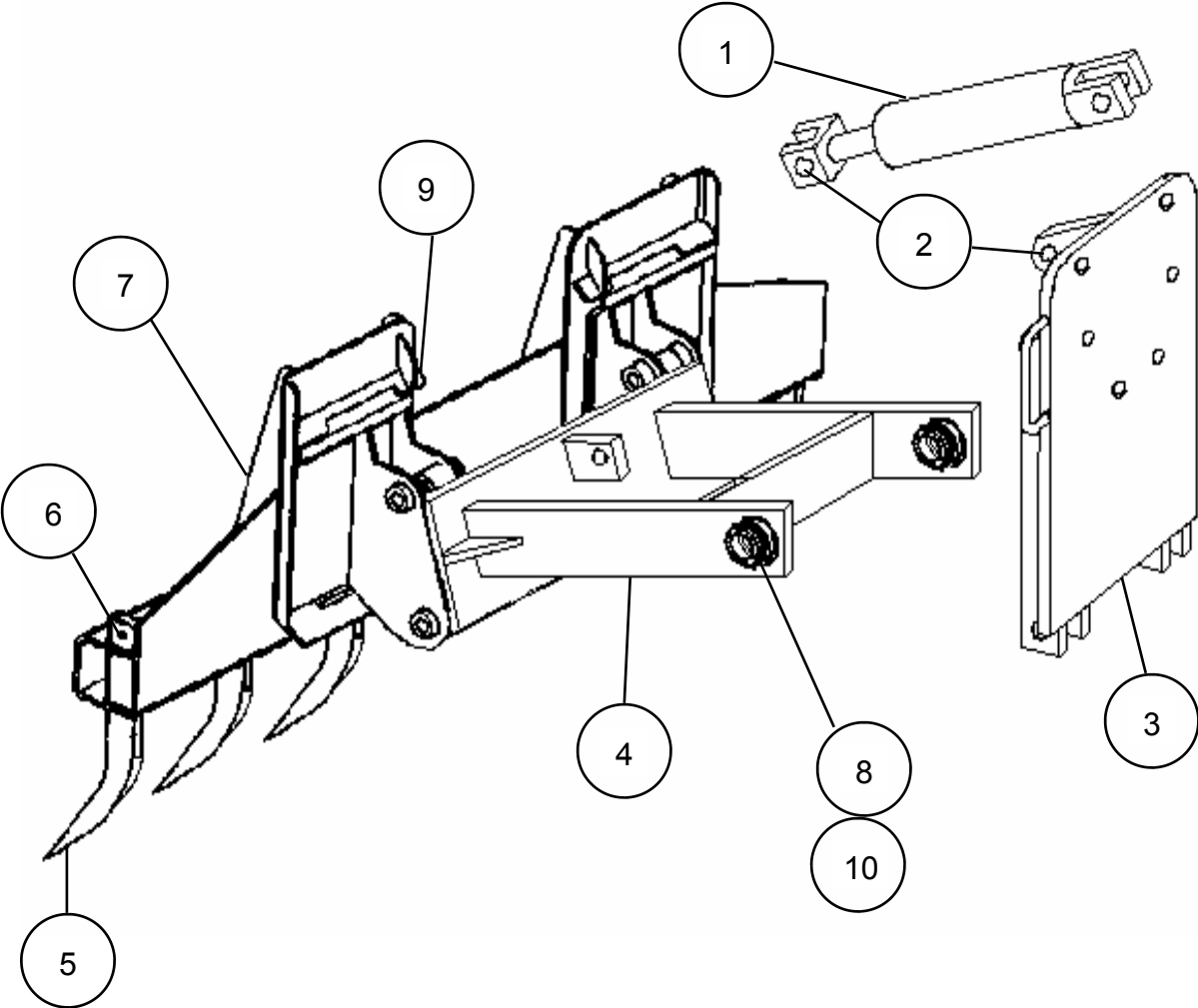
Item	Part #	Description
1	056859	DECAL, ANTI-FREEZE (BLACK)
2	L065440	DECAL, SEAT BELT
3	065922	DECAL, IMPORTANT
4	065927	DECAL, DANGER PINCH POINT
5	065933	DECAL, DANGER (RED, BLACK)
6	072798	DECAL, COOLANT UNDER PRESSURE
7	094951	DECAL, MADE IN USA (YELLOW)
9	202900	DECAL, CAUTION NO SHIFT IN MO-
10	204025	DECAL, 510D LEFT HAND CN
11	204026	DECAL, 510D RIGHT HAND CN
12	204102	DECAL, BELT DO NOT OVER TIGHTEN
13	206000	DECAL, HYDRAULIC OIL LEVEL
14	209850	DECAL, R.O.P.S. 690
15	211400	DECAL, SPEED CONTROL PEDAL
16	213600	DECAL, THROTTLE METAL
17	A1004059	DECAL, HYDROSTATIC FLUID NEW
18	D0194	DECAL, READ MANUAL US
19	L072797	DECAL, DIESEL FUEL
20	L277231	DECAL, OPERATOR WARNING
21	L65920	DECAL, GREASE DAILY
22	L65924	DECAL, WARNING ROTATING PARTS
23	108089	DECAL, MACHINE SERIAL NO. PLATE
24	D0344	DECAL, LARGE PSI
25	41979	DECAL, CAUTION, LUG NUTS
26	D0345	DECAL, MED. PSI
27	D0341	DECAL, CAUTION LOWER TOOL BAR
28		DECAL, LARGE MG618
29	D0348	DECAL, SMALL PSI
30	D0347	DECAL, LARGE STRIPE
31	A1003938	DECAL, WARNING, ROPS
32	204111	DECAL, PARK BRAKE
33	065440	DECAL, LOWER BLADE & ATTACH



The Decal Kit for the Model MG618 Maintainer is

Item	Part #	Description
1	056859	DECAL, ANTI-FREEZE (BLACK)
2	L065440	DECAL, SEAT BELT
3	065922	DECAL, IMPORTANT
4	065927	DECAL, DANGER PINCH POINT
5	065933	DECAL, DANGER (RED, BLACK)
6	072798	DECAL, COOLANT UNDER PRESSURE
7	094951	DECAL, MADE IN USA (YELLOW)
9	202900	DECAL, CAUTION NO SHIFT IN MO-
10	204025	DECAL, 510D LEFT HAND CN
11	204026	DECAL, 510D RIGHT HAND CN
12	204102	DECAL, BELT DO NOT OVER TIGHTEN
13	206000	DECAL, HYDRAULIC OIL LEVEL
14	209850	DECAL, R.O.P.S. 690
15	211400	DECAL, SPEED CONTROL PEDAL
16	213600	DECAL, THROTTLE METAL
17	A1004059	DECAL, HYDROSTATIC FLUID NEW
18	D0194	DECAL, READ MANUAL US
19	L072797	DECAL, DIESEL FUEL
20	L277231	DECAL, OPERATOR WARNING
21	L65920	DECAL, GREASE DAILY
22	L65924	DECAL, WARNING ROTATING PARTS
23	108089	DECAL, MACHINE SERIAL NO. PLATE
24	D0344	DECAL, LARGE PSI
25	41979	DECAL, CAUTION, LUG NUTS
26	D0345	DECAL, MED. PSI
27	D0341	DECAL, CAUTION LOWER TOOL BAR
28		DECAL, LARGE MG618
29	D0348	DECAL, SMALL PSI
30	D0347	DECAL, LARGE STRIPE
31	A1003938	DECAL, WARNING, ROPS
32	204111	DECAL, PARK BRAKE
33	065440	DECAL, LOWER BLADE & ATTACH

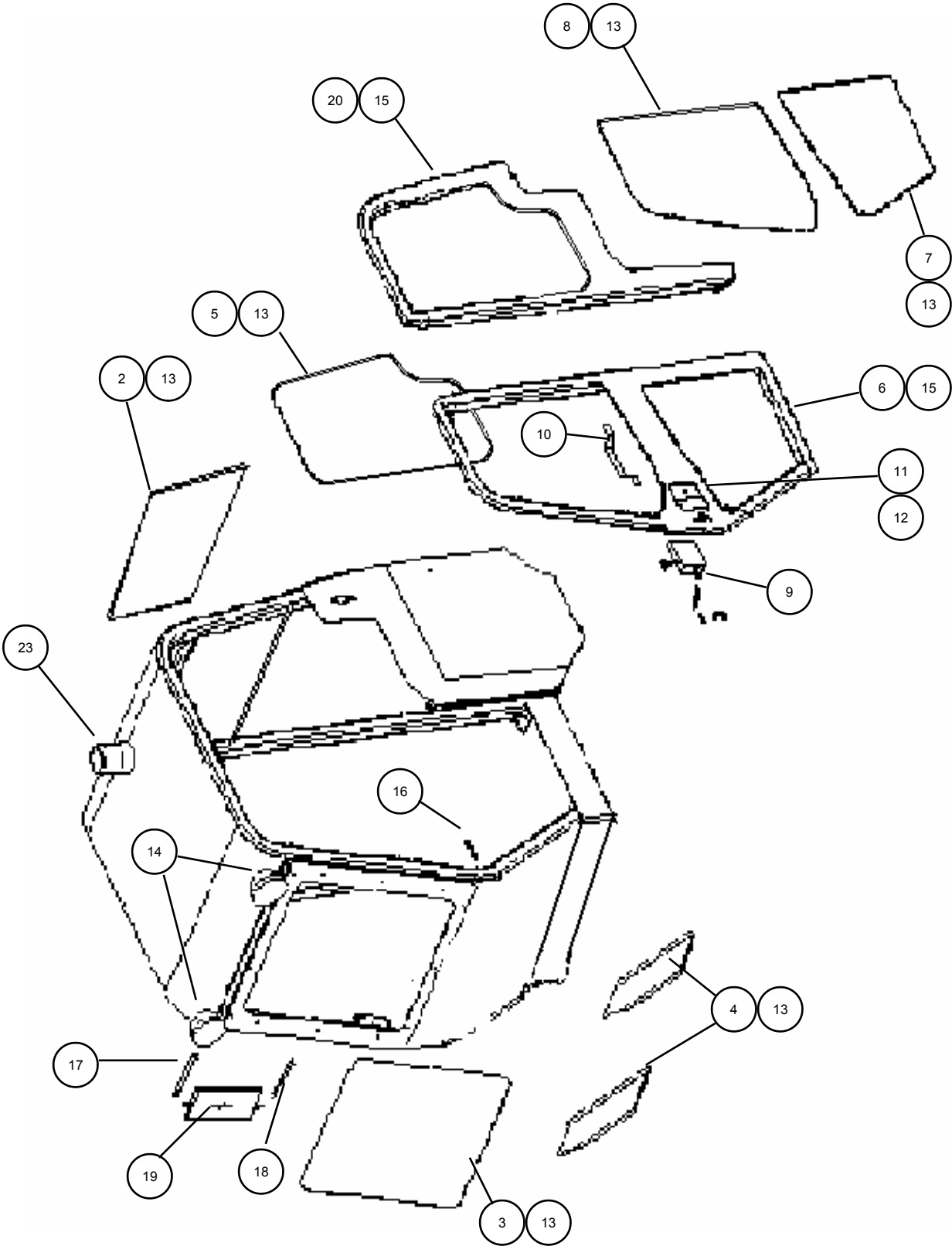
MG618 - SCARIFIER



MG618 - SCARIFIER

Ref. No	Part No.	Description	Qty. Req.
1	274700	CYLINDER, DOZER LIFT	1
2	108955	PIN 1.X 3	2
3	618901	SCARIFIER FRAME MOUNT	1
4	618902	SCARIFIER MOUNTING BRACKET	1
5	257370	SHANK, W/RIPPER TIP	7
5a	257371	END BIT (RIPPER TIP)	7
6	108348	HITCH PIN	6
7	106052	SCARIFIER WELD ATTACH OP- TION	1
8	108572	PIN 2 X 5.50	2
9	108893	QUICK TACH	1
10	047200	BUSHING	2

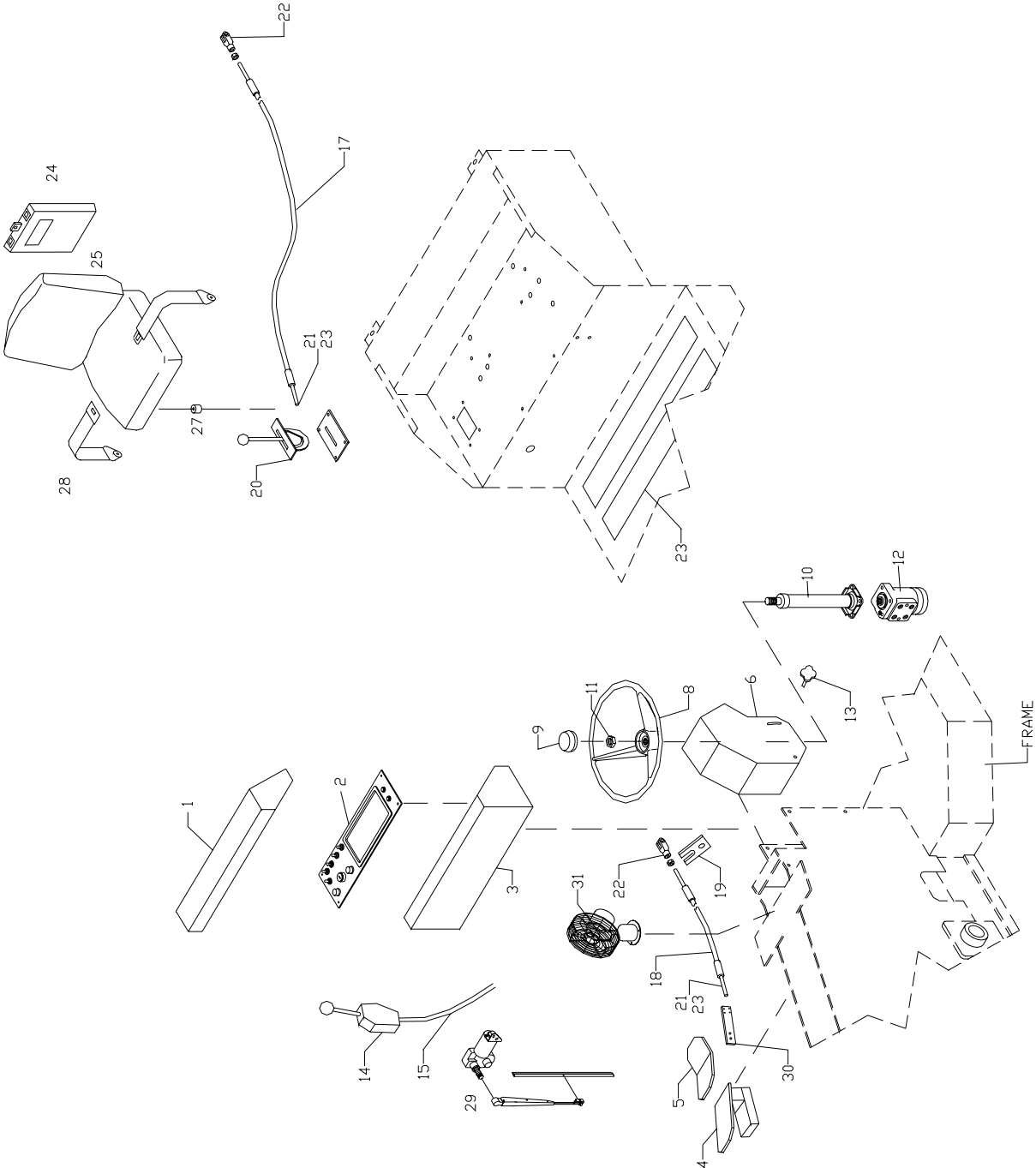
MG618 - Cab Enclosure Group



MG618 - Cab Enclosure Group

Ref. No	Part No.	Description	Qty. Req.	Ref. No	Part No.	Description	Qty. Req.
1	108224	UPPER ROPS WELD	1	NS	108557	HANDLE, PADDLE, RH	1
2	108546	REAR GLASS	1	NS	108558	KEY	2
3	108547	WINDSHIELD GLASS	1	12	108559	GASKET PADDLE	2
4	108548	FRONT SIDE GLASS	2	13		BULK WEATHER-STRIP (Specify Length)	AR
5	252301	REAR SIDE GLASS	2	14	108393	WORK LIGHT	4
6	108549	LT. DOOR WELD-NO GLASS	1	15		BULK DOOR STRIP (Specify Length)	AR
ns	108550	RT. DOOR WELD-NO GLASS	1	16	L63548	DOOR STRIKER	2
7	108553	LOWER DOOR GLASS	2	17	108963	UPPER. MIRROR MOUNT	2
8	108554	UPPER DOOR GLASS	2	18	108964	LOWER,. MIRROR MOUNT	2
ns	108555	RT. DOOR LATCH	1	19	108565	MIRROR, 16 X 6	2
9		LT. DOOR LATCH	1	20	108551	LT REAR SIDE ASSY	1
9a		ROTARY LATCH	1	NS	108552	RT REAR SIDE ASSY	1
9b		LINK, LATCH	2	21	399000	HOLDER SOCKET	1
9c		SPRING PIN	2	22	371200	PLUG	1
10	108556	INSIDE HANDLE	2	23	108392	BEACON	1
11	108557	HANDLE, PADDLE, LH	1				

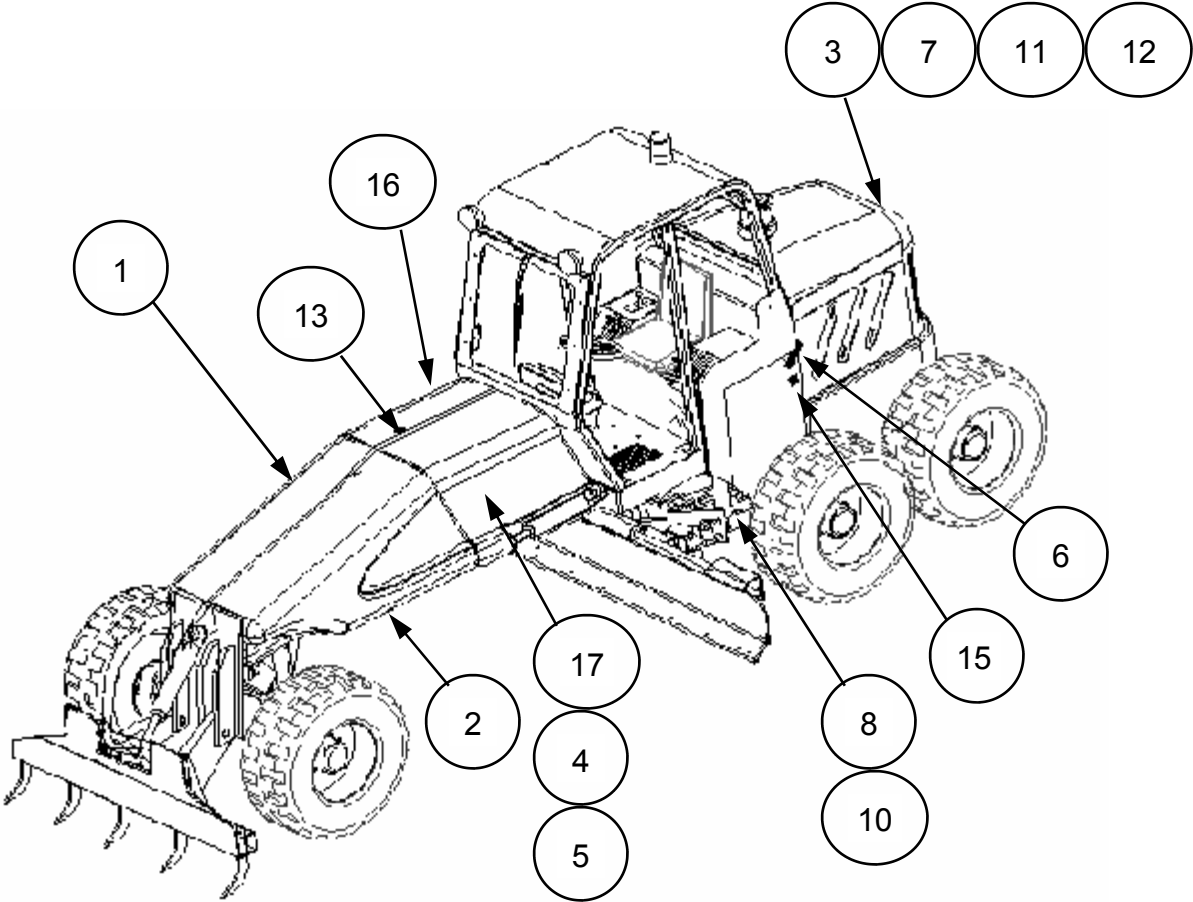
MG618 - Operation Station



MG618 - Operation Station

Ref. No	Part No.	Description	Qty. Req.	Ref. No	Part No.	Description	Qty. Req.
1	008915	COVER, GAUGE PANEL	1	21	108867	SWIVEL ASSY	2
2	108207	INSTRUMENT PANEL ASSY	1	22	108379	CLEVIS	2
3	108390	DASH ENCLOSURE WELD	1	23	108522	CLAMP ASSY	2
4	108523	FOOT PEDAL	1	24	413900	SAFETY TREAD 6" WIDE	1
5	108542	EXTENSION, FOOT CONTROL	1	25	L62459	MANUAL STORAGE BOX	1
6	618710	MOUNT, STEERING COLUMN	1	26	250-0031	SEAT ASSY	1
6A	618715	COVER, STC. CONSOLE FRONT	1	27	AR	RISER	4
6B	618716	COVER, STC CONSOLE TOP	1	28	395150	SEAT BELT W/HDWR	1
7	108871	KNOB, STEERING TILT, 3/8-16	1	29	L61198	WIPER MOTOR W/ SWITCH	1
8	108153	STEERING WHEEL	1	29a	L48182	SWITCH	1
9	108155	CAP	1	29b	L61199	WIPER ARM	1
10	108152	STEERING COLUMN	1	29c	L61200	WIPER BLADE	1
11	108154	NUT, STEERING COLUMN	1	30	108868	EXTENSION, ACCELERATOR (M413XT)	1
12	108151	STEER MOTOR	1	31	L61190	DEFROST FAN W/ SWITCH	1
13	108871	KNOB, STAR	2	31a	L277274	SWITCH ONLY	1
14	618717	LEVER	8				
15	618718	CABLE, 6 FT	8				
16	316655	REV. HORN SW. BRACKET	1				
17	108375	THROTTLE CABLE	1				
18	108376	HYDROSTAT CABLE	1				
19	108545	BRACKET, HYDST CABLE	1				
20		LEVER, THROTTLE	1				

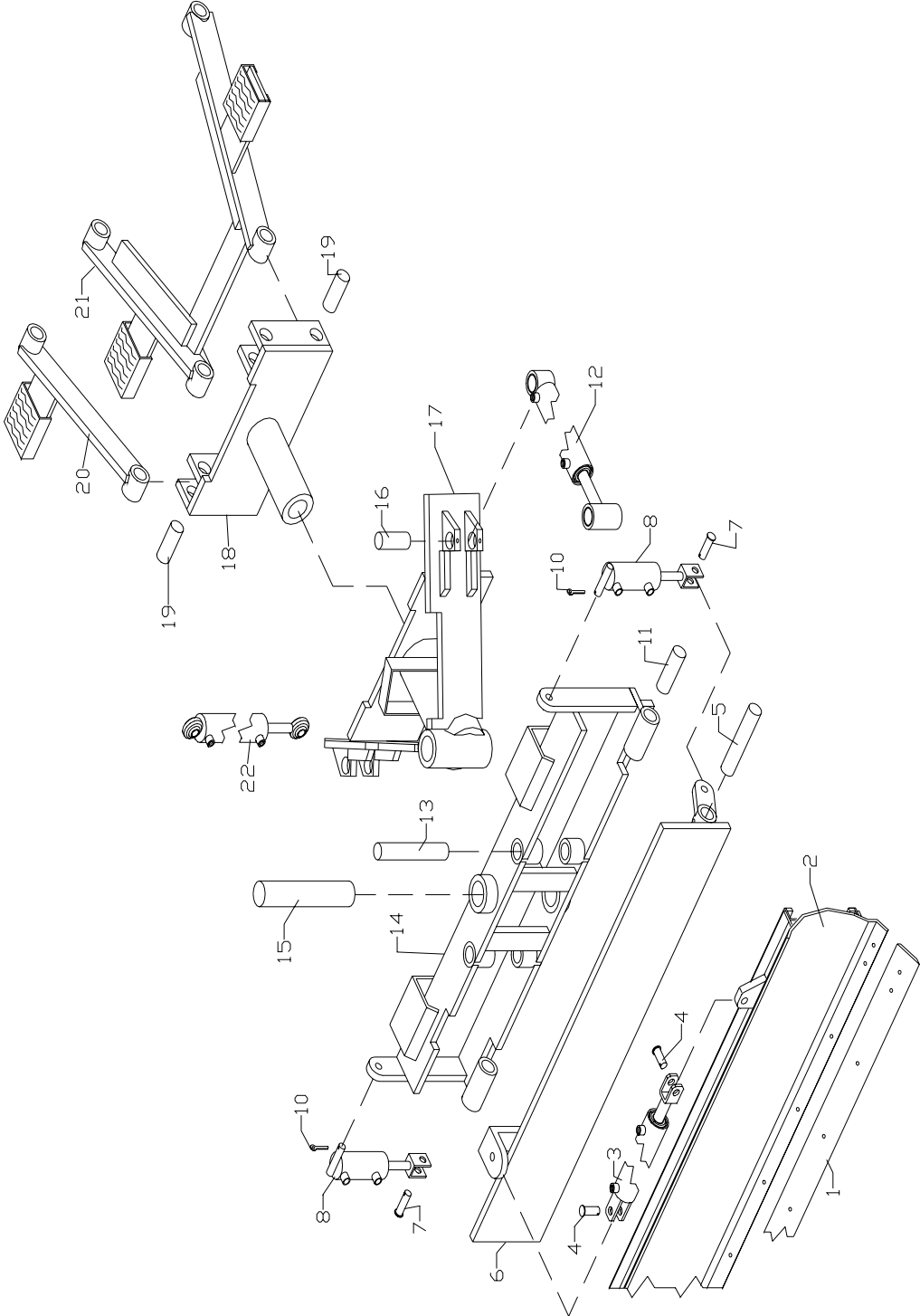
MG618 - Fuel Tanks & Rear Hood/Panels Group



MG618 - Fuel Tanks & Rear Hood/Panels Group

Ref. No.	Part. No.	Description	Qty. Req.
1	108093	COVER, RH	1
2	108097	COVER, LH	1
3	108124	HOOD ASSEMBLY	1
4	618811	FUEL TANK	1
5	108972	HOSE, 1.00 FUEL LINE	12 inch
6	108524	DRAW LATCH	2
7	398800	SMV SIGN	1
8	108861	PANEL, SIDE, LEFT, WELDMENT	1
9	108862	PANEL, SIDE, RIGHT, WELDMENT	1
10	108864	DOOR, ACCESS, HYDRAULICS	1
11	108869	HANDLE, REAR HOOD M413	1
12	108896	BRACKET, REAR HOOD	2
13	108852	FUEL FILL CAP	1
14 NS	395645	FUEL SENDER	1
15	108878	KNOB, STAR	2
16		COVER, RH, FUEL TANK	1
17		COVER, LH, FUEL TANK	1

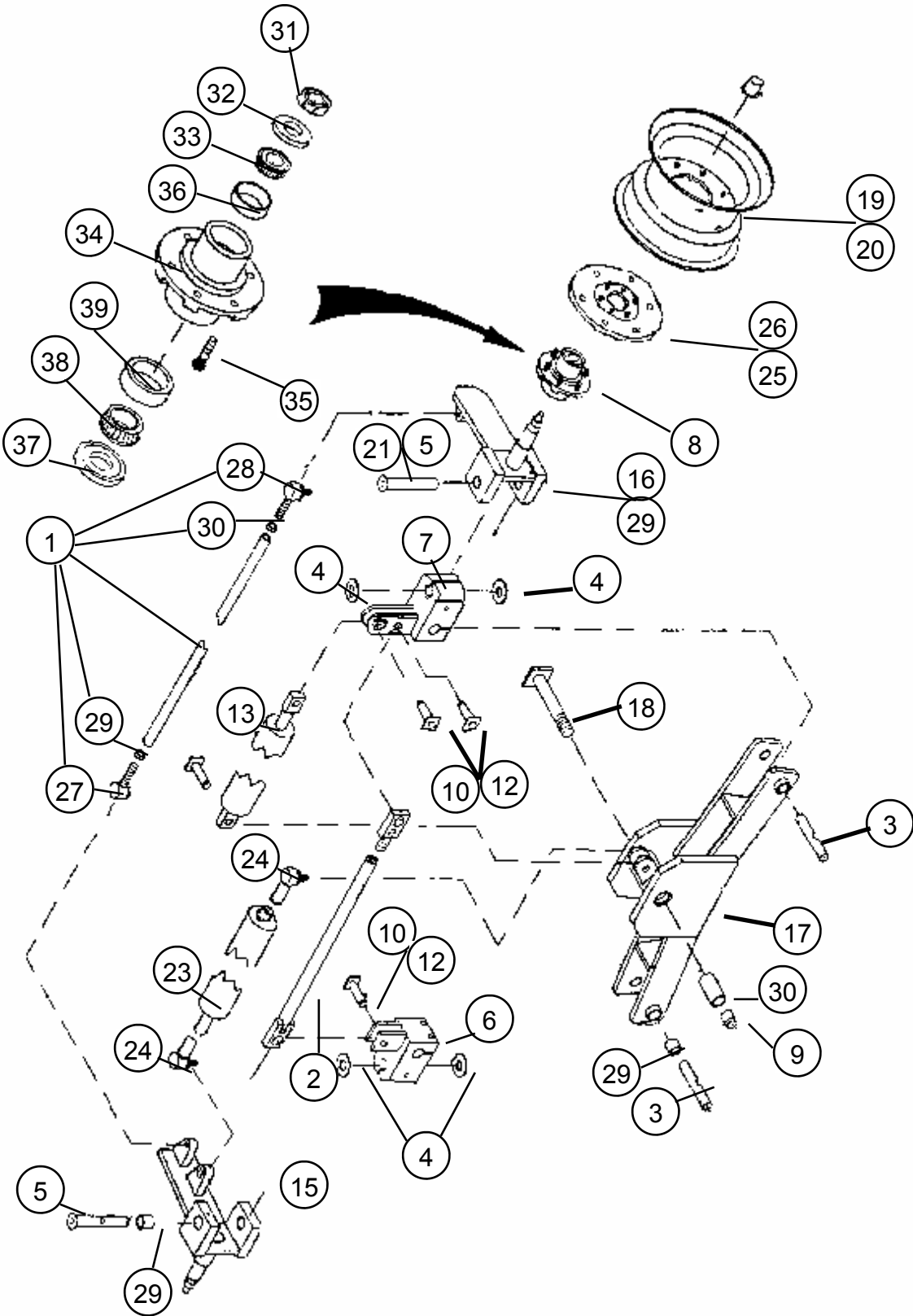
MG618- Moldboard Assembly Group



MG618- Moldboard Assembly Group

Ref. No	Part No.	Description	Qty. Req.	Ref. No	Part No.	Description	Qty. Req.
1	215000	CUTTING EDGE 1/2 X 6 X 120	1	13	300325	ROD END PIVOT PIN	2
2	006105	MOLDBOARD WELDMENT	1	14	108346	HANGER PIVOT WELD	1
3	007201	MOLD BD. SIDE SHIFT CYL	1	15	300350	HANGER PIVOT PIN 3X16"	1
4	102317	ROD END PIN	1	16	292800	BUTT END PIN	2
	471296	BUTT END PIN	1	17	108168	HANGER PIVOT COLLAR	1
5	292500	BLADE TILT PIN	2	18	007400	PUSH BLOCK WELD	1
6	003965	HANGER SLIDE/TILT WELD	1	19	104950	FRONT PUSH BAR PIN	4
7	108347	CLEVIS PIN 1X2"	4	20	007450	UPPER PUSH BAR WELD	2
8	104886	BLADE TILT CYL	2	21	108275	LOWER PUSH BAR WELD	1
10	360800	COTTER PIN 5/32X2"	4	22	006401	BLADE LIFT CYL	2
11	047200	BRONZE BUSHING 3"	4	NS	03160	BOLT	12
12	003700	LT. & RT. BLADE ANGLE CYL	2	NS	81015	NUT	12
	616601	STEP, LONG	2		616602	STEP, SHORT	2

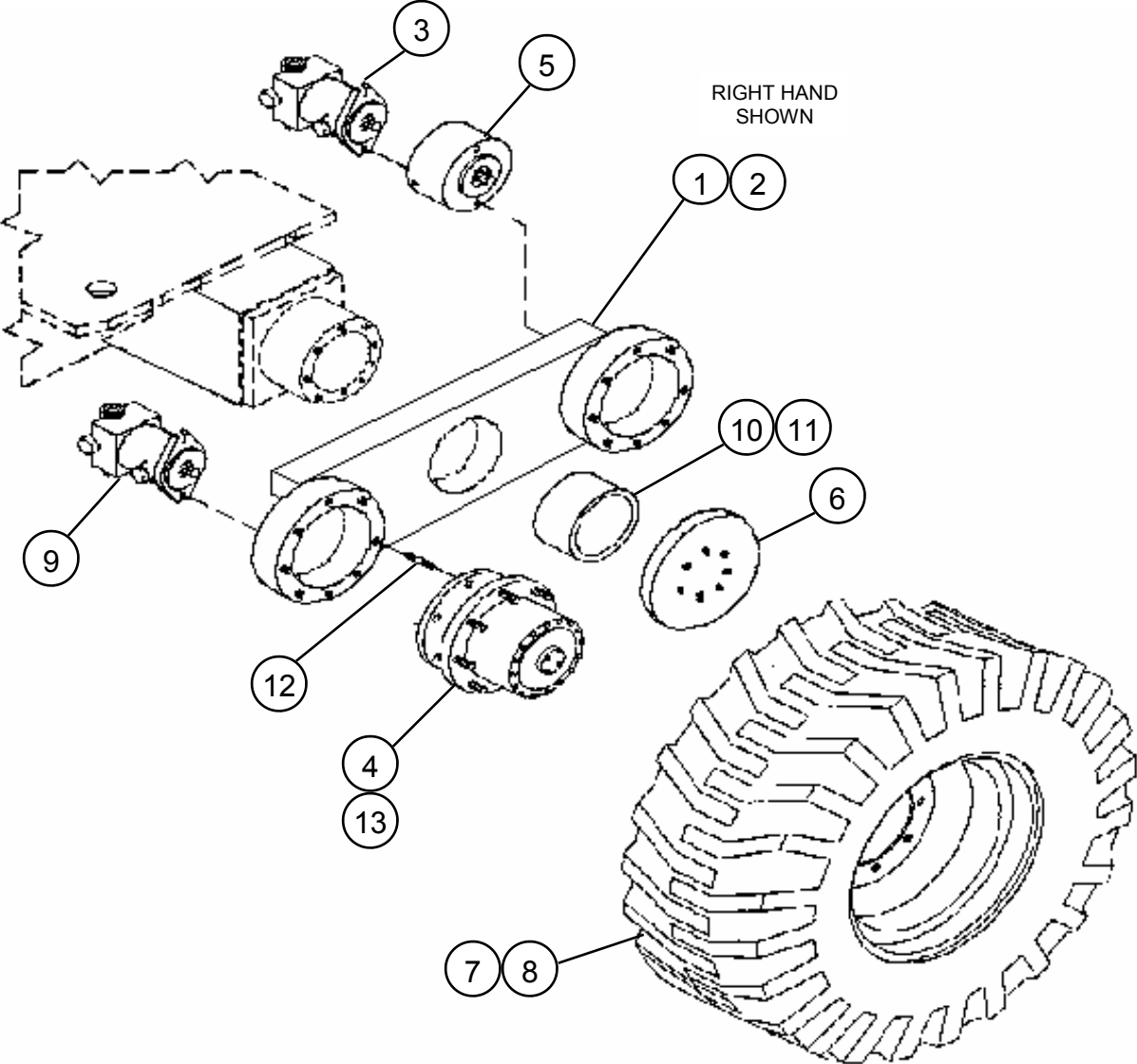
MG618 - Front Axle Assembly



MG618 - Front Axle Assembly

Ref. No	Part No.	Description	Qty. Req.	Ref. No	Part No.	Description	Qty. Req.
1	277542	TIE ROD ASSY.	1	19	108127	ASSY, WHEEL	2
2	618501	TIE ROD ASSY., WHEEL LEAN	1	20	356800	NUT, 5/8 LUG	18
2A	618514	TIE ROD END	1	21	050582	BOLT, 1/2-13X5 1/2 HEX	2
2B	618515	TIE ROD	1	23	080118	CYLINDER, STEER	1
3	272200	PIN, WHEEL LEAN	2	24	080562	BALL JOINT, STEERING	2
4	272220	WASHER	4	25	B1042	STUD, 5/8-18	18
5	272230	KING PIN	2	26	616501	ADAPTOR, WHEEL	2
6	272290	LEAN MOUNT, LH	1	27	277538	END, TIE ROD RH FR AXLE	1
7	272300	LEAN MOUNT, RH	1	28	277539	END, TIE ROD LH FR AXLE	1
8	274650	HUB ASSY.	2	29	277540	NUT, 7/8-18 JAM RH	1
9	275820	NUT, 2-12 JAM HEX	1	30	277541	NUT, 7/8-18 JAM LH	1
10	108955	PIVOT PIN	4	31		NUT	1
12	276632	RING, RETAINER	4	32		WASHER	1
13	276849	CYL, WHEEL LEAN RH	1	33		BEARING	1
15	277826	SPINDLE LH	1	34		HUB	1
16	277827	SPINDLE RH	1	35		STUD	6
17	104903	FRONT AXLE	1	36		BEARING CUP	1
18	272310	PIN, AXLE PIVOT	1	37		SEAL	1
				38		BEARING	1
				39		BEARING CUP	1

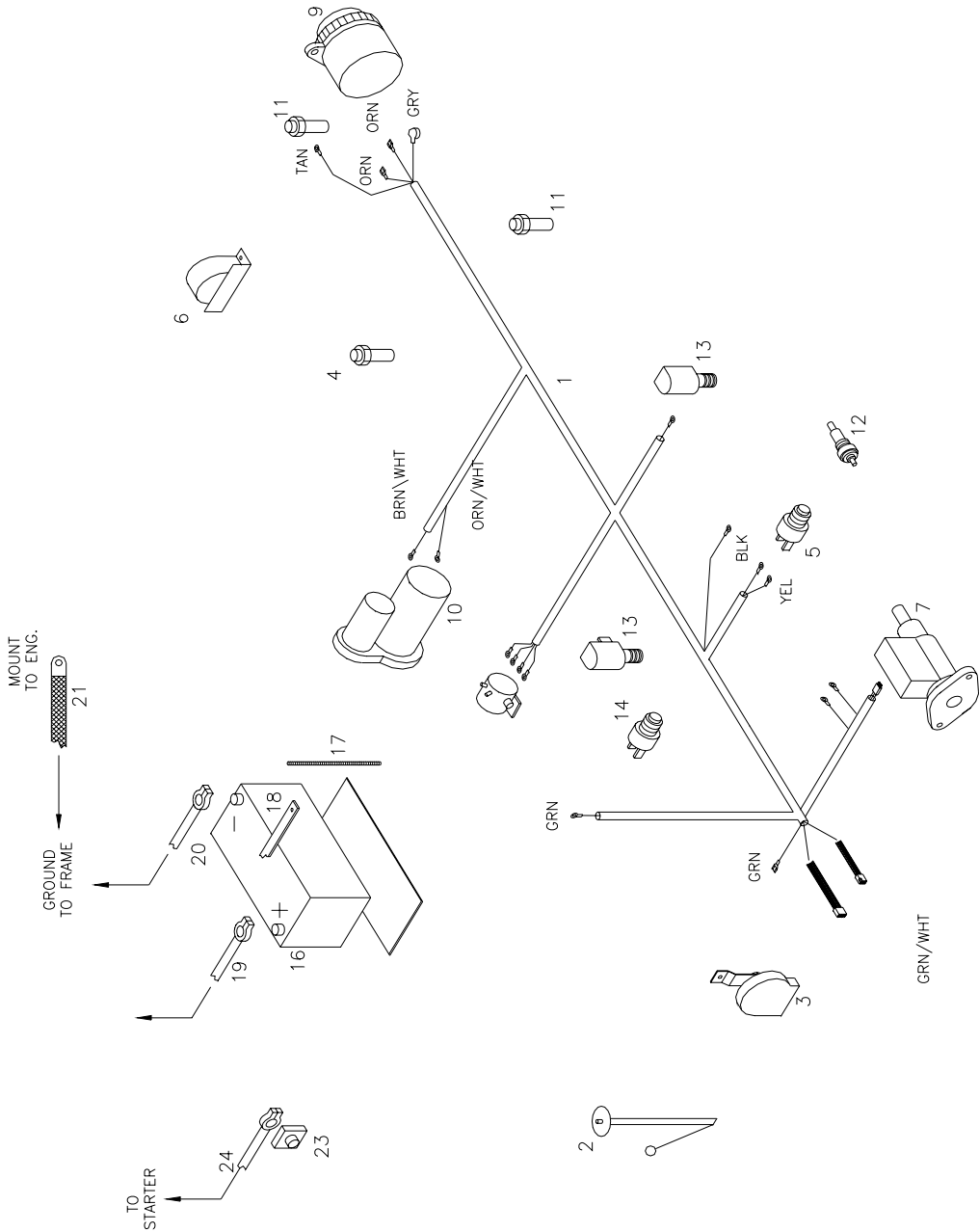
MG618 - Rear Drive Group



MG618 - Rear Drive Group

Ref. No	Part No.	Description	Qty. Req.	Ref. No	Part No.	Description	Qty. Req.
1	618301	BOOGIE BEAM RH	1	7C	406600	VALVE STEM	2
2	618302	BOOGIE BEAM LH	1	7D	412700	TIRE-STD. 15-19.5 8 PLY	2
3	108975	MOTOR, VARIABLE	1	7E	413200	TIRE-OPTIONAL SAND TYPE	1
4	108992	HUB, WHEEL DRIVE	4	8	356800	LUG NUT 5/8"	18
5	108993	BRAKE, WHEEL MOTOR	2	9	108144	DRIVE MOTOR	2
6	618308	RETAINER, BOOGIE BEAM	2	10	618309	SPACER	2
7	108127	WHEEL & TIRE ASSY	2	11	277609	O-RING	2
7A	381940	RIM-STD.6" OFFSET 19-1/2 X 15	2	12	407000	HUB MOUNT STUD 5/8"	6
7B	481930	RIM-OPTIONAL SAND TIRE	2	13	B1042	WHEEL MOUNT STUD 5/8"	16

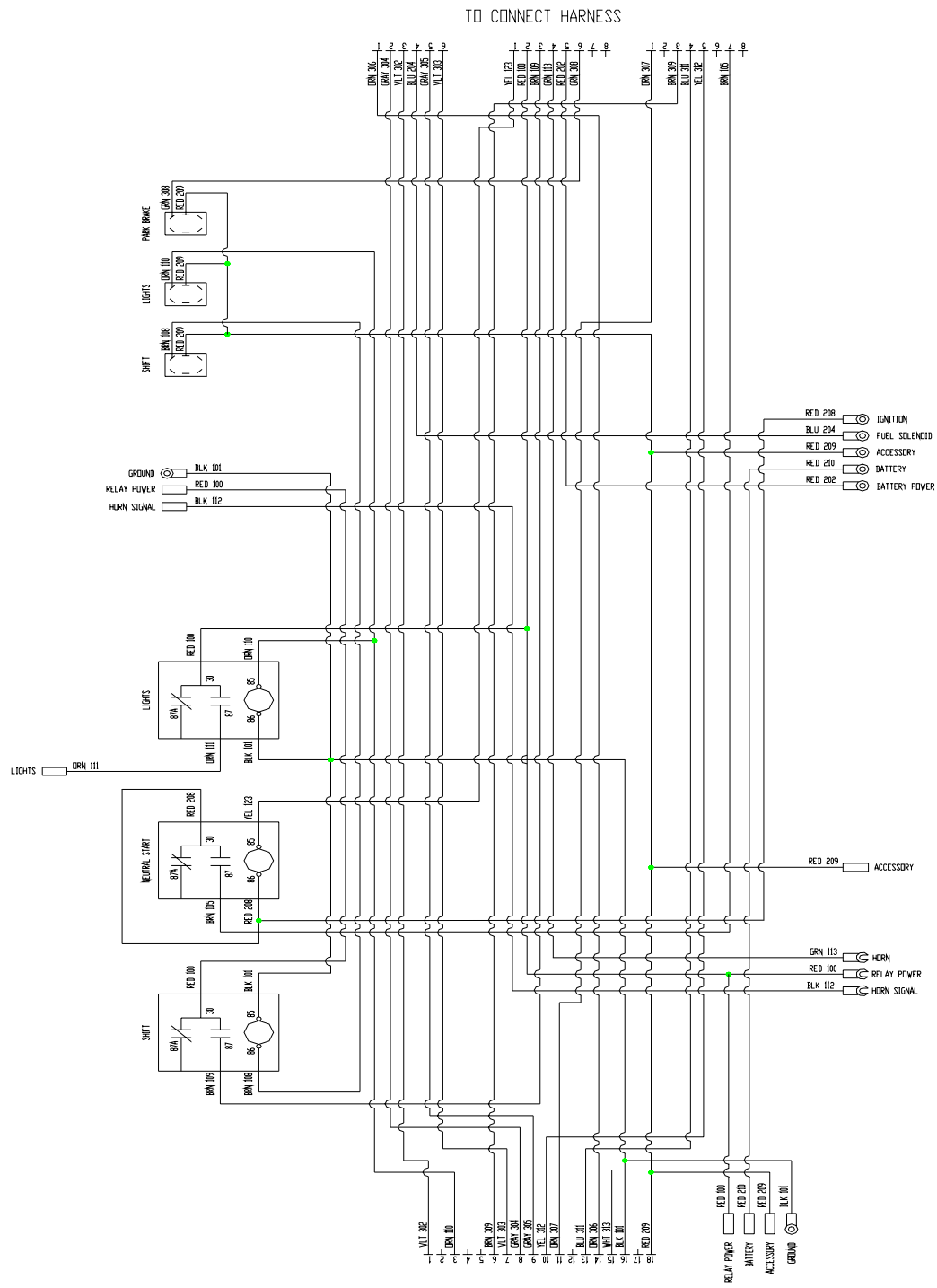
MG618-Engine Wiring Hookup



MG618-Engine Wiring Hookup

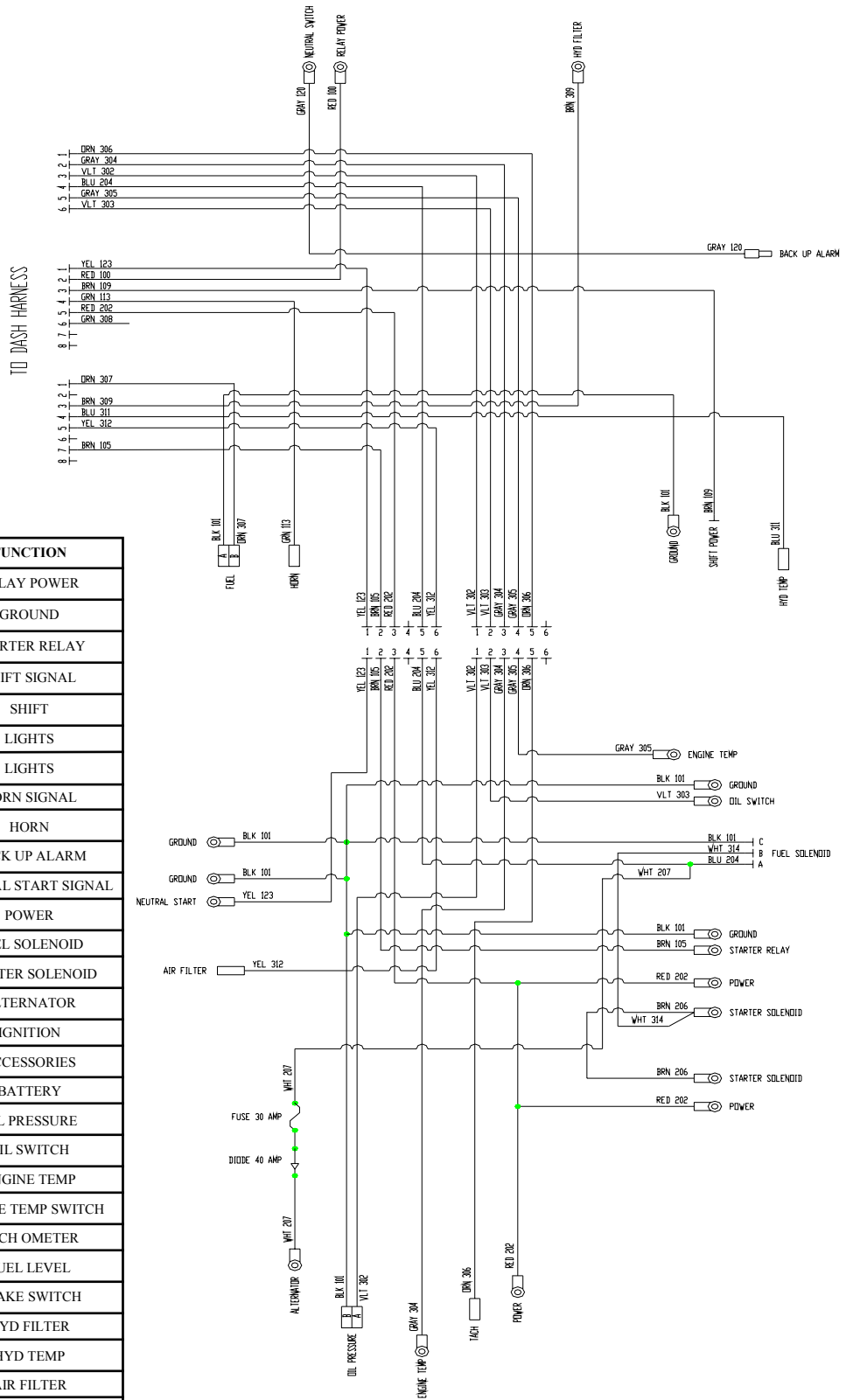
Ref. No	Part No.	Description	Qty. Req.	Ref. No	Part No.	Description	Qty. Req.
1	018610	ENG. WIRE HARNESS	1	13	108974	2-SPEED COIL	1
2	395645	FUEL SENDER	1	14	408850	BACKUP ALARM SWITCH	1
3	L41847	HORN	1	15	003407	BATTERY BOX	1
4	395660	HYD. TEMP. SENDER	1	16	108851	BATTERY	1
5	407200	NEUTRAL START SWITCH	1	17	108925	BATTERY HOLD DOWN BOLT	2
6	277-0014	BACKUP ALARM	1	18	108930	BATTERY HOLD DOWN	1
7		FUEL INJECTION PUMP	1	19	108919	POSIT. CABLE	1
8	103170	WATER TEMP SENDER	1	20	108859	NEG. CABLE	1
9		ALTERNATOR	1	21	108918	GROUND STRAP	1
10	S01-00397	STARTER SOLENOID	1	22	108879	SOLENOID. GLOW PLUG	1
11	103168	OIL PRESS SENDER	1	23	108880	TERMINAL, REMOTE JUMP START	1
12		HYD. FILTER SENDER	1		108881	CABLE, STARTER TO REMOTE JUMP TERM.	1
	103170	GAUGE	1		108916	CABLE, STARTER TO JUMPER, 40"	1
	103172	SWITCH LIGHT	1		108917	CABLE, RELAY TO GLOW PLUG.	1
					108924	JUMPER PLATE, GRID HEATER	1

MG618 - ELECTRICAL SCHEMATIC

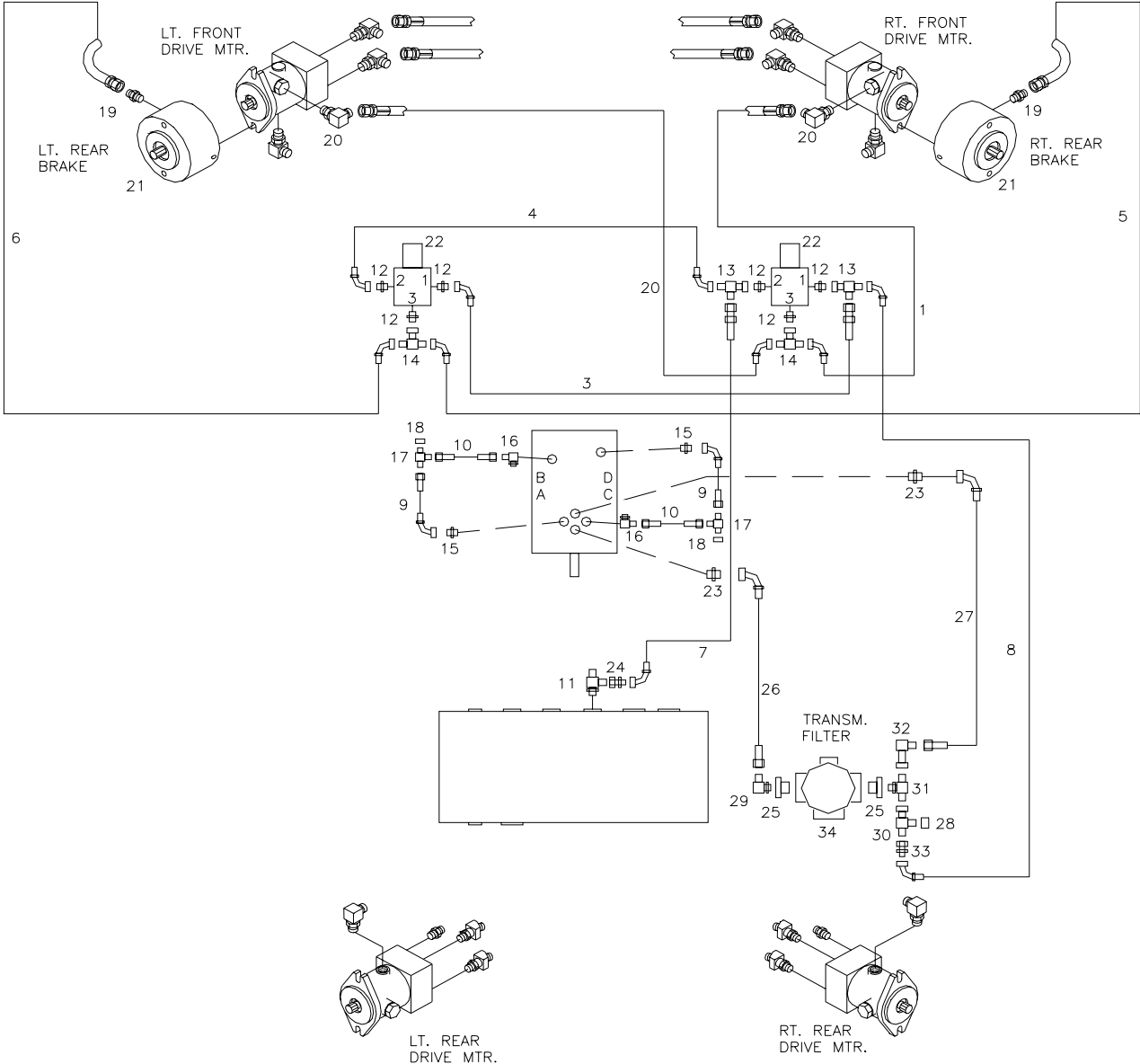


MG618 - ELECTRICAL SCHEMATIC

ID	GA	COLOR	FUNCTION
100	14	RED	RELAY POWER
101	14	BLACK	GROUND
105	14	BROWN	STARTER RELAY
108	14	BROWN	SHIFT SIGNAL
109	14	BROWN	SHIFT
110	14	ORANGE	LIGHTS
111	14	ORANGE	LIGHTS
112	14	BLACK	HORN SIGNAL
113	14	GREEN	HORN
120	14	GRAY	BACK UP ALARM
123	14	YELLOW	NEUTRAL START SIGNAL
202	14	RED	POWER
204	14	BLUE	FUEL SOLENOID
206	14	BROWN	STARTER SOLENOID
207	12	WHITE	ALTERNATOR
208	14	RED	IGNITION
209	14	RED	ACCESSORIES
210	14	RED	BATTERY
302	16	VIOLET	OIL PRESSURE
303	16	VIOLET	OIL SWITCH
304	16	GRAY	ENGINE TEMP
305	16	GRAY	ENGINE TEMP SWITCH
306	14	ORANGE	TACH OMMETER
307	16	ORANGE	FUEL LEVEL
308	16	GREEN	BRAKE SWITCH
309	16	BROWN	HYD FILTER
311	16	BLUE	HYD TEMP
312	16	YELLOW	AIR FILTER
314	14	WHITE	KILL SWITCH

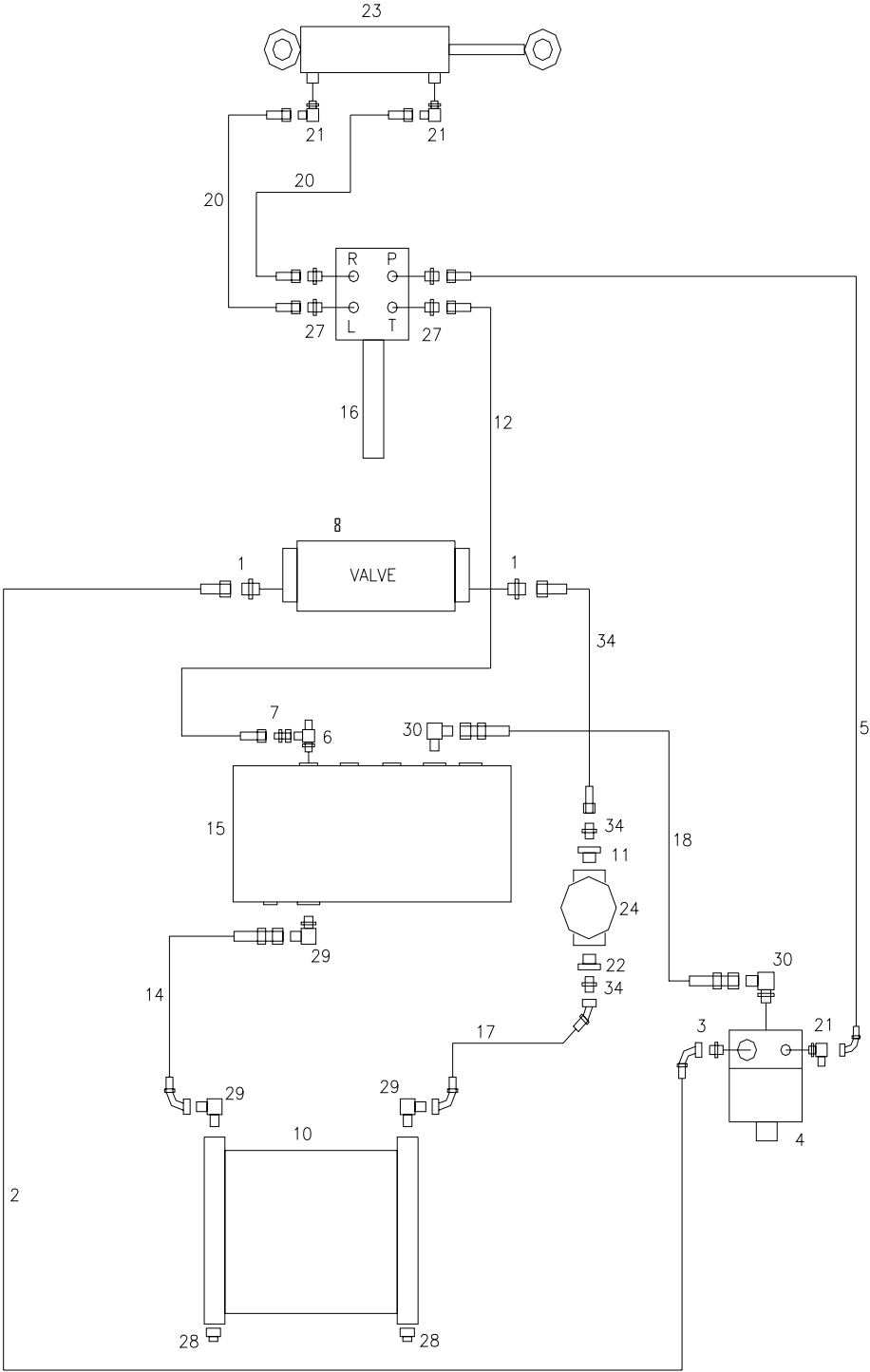


MG618-HYDRAULIC SYSTEMS Charge circuit Front Drive and Rear Brakes



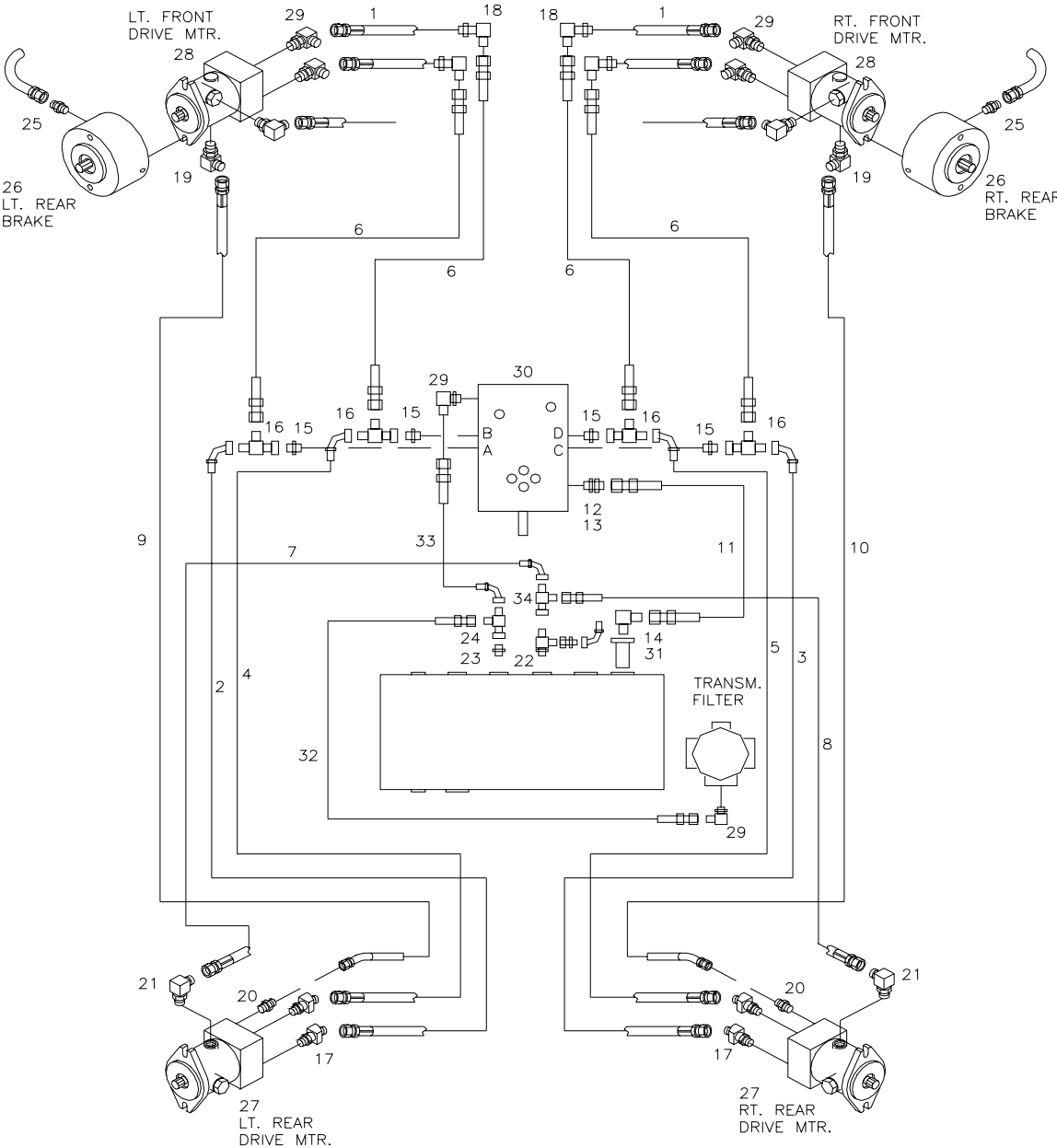
MG618-HYDRAULIC SYSTEMS

Ref. No	Part No.	Description	Qty. Req.	Ref. No	Part No.	Description	Qty. Req.
1		HOSE, 04	1	18	108594	CAP, 4	2
2		HOSE, 04	1	19	108409	FITTING, 4-4	2
3		HOSE, 04	1	20		90° ELBOW	2
4		HOSE, 04	1	21	045650	BRAKE ASSY.	2
5		HOSE, 04	1	22	108974	SOLENOID VALVE	2
6		HOSE, 04	1	23	108511	STR. CONNECTER	2
7		HOSE, 04	1	24	108435	REDUCER	1
8		HOSE, 04	1	25	108442	REDUCER	2
9		HOSE, 04	2	26	108459	HOSE	1
10		HOSE, 04	2	27	108460	HOSE	1
11	F1545	FITTING, TEE, 8-8-8	1	28	108594	CAP	1
12	108403	FITTING, TEE, 6-6-6	3	29		90° ELBOW	1
13	108593	FITTING, 6-6	6	30	108419	TEE	1
14	F1506	FITTING, TEE, 6-6-6	2	31	F1361	TEE	1
15	F1355	FITTING, 4-6	2	32	F1323	90° ELBOW, LONG	1
16	F1319	FITTING, 90, 4-6	2	33	108435	REDUCER	1
17	108448	FITTING, 4-4-4	2	34	HC447	FILTER HEAD	1
					220750	FILTER, CHARGE PRES.	1



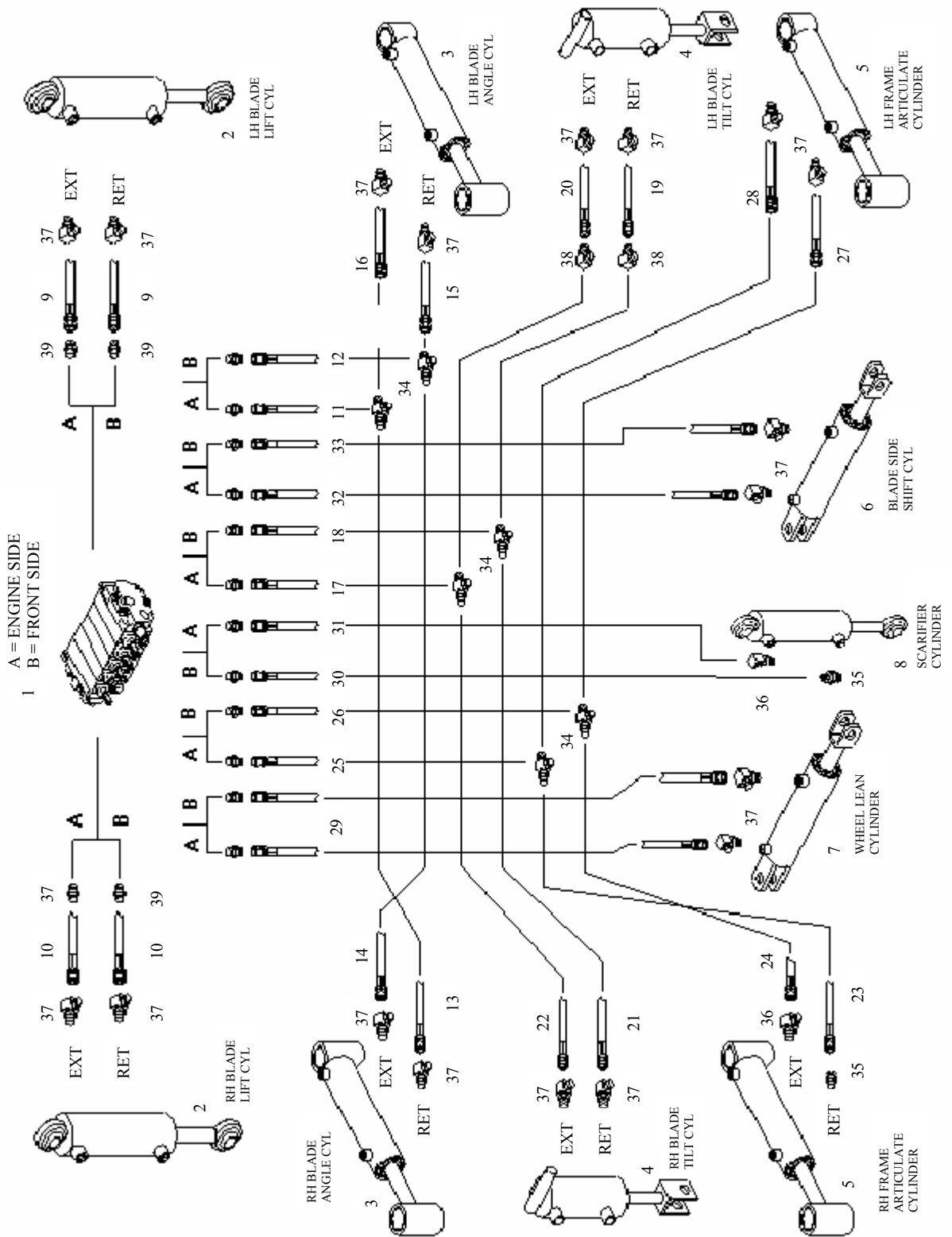
MG618-HYDRAULIC SYSTEMS

Ref. No	Part No.	Description	Qty. Req.	Ref. No	Part No.	Description	Qty. Req.
1	234700	STR. CONTRA. (6400)-12/-12	4	20		HOSE ASSY 3/8	2
2		HOSE ASSY	1	21	108443	90° ELBOW (6801)-6--6	4
3	108402	STR. CONNTR.	1	22	108440	REDUCER	1
4	108040	PUMP, HYDRAULIC, GEAR	1	23	007601	STEER CYL. ASSY	1
5		HOSE ASSY 3/8	1	24	108156	RETURN FILTER HEAD	1
6	108434	TEE	1	24a	108157	ELEMENT	1
7	108435	REDUCER	1	25		HOSE, 12	1
8	618218	VALVE	1	26		HOSE, 12	1
				27	108403	STR. CONNTR	4
10	108159	OIL COOLER	1	28	M0049	PLUG	2
11	108438	REDUCER	2	29	F1311	90° ELBOW	3
12		HOSE ASSY 3/8	1	30	108401	90° ELBOW	2
14		HOSE ASSY	1	31	108411	90° ELBOW	1
15	108110	TANK, HYDRAULIC	1	32	F1264	TEE	1
16	347401	STEER MOTOR ASSY	1	33		HOSE, 12	1
17		HOSE, 16	1	34	108402	STR. CONNTR	2
18		HOSE ASSY	1				1
19	228200	STR. CONNTR.	1				1



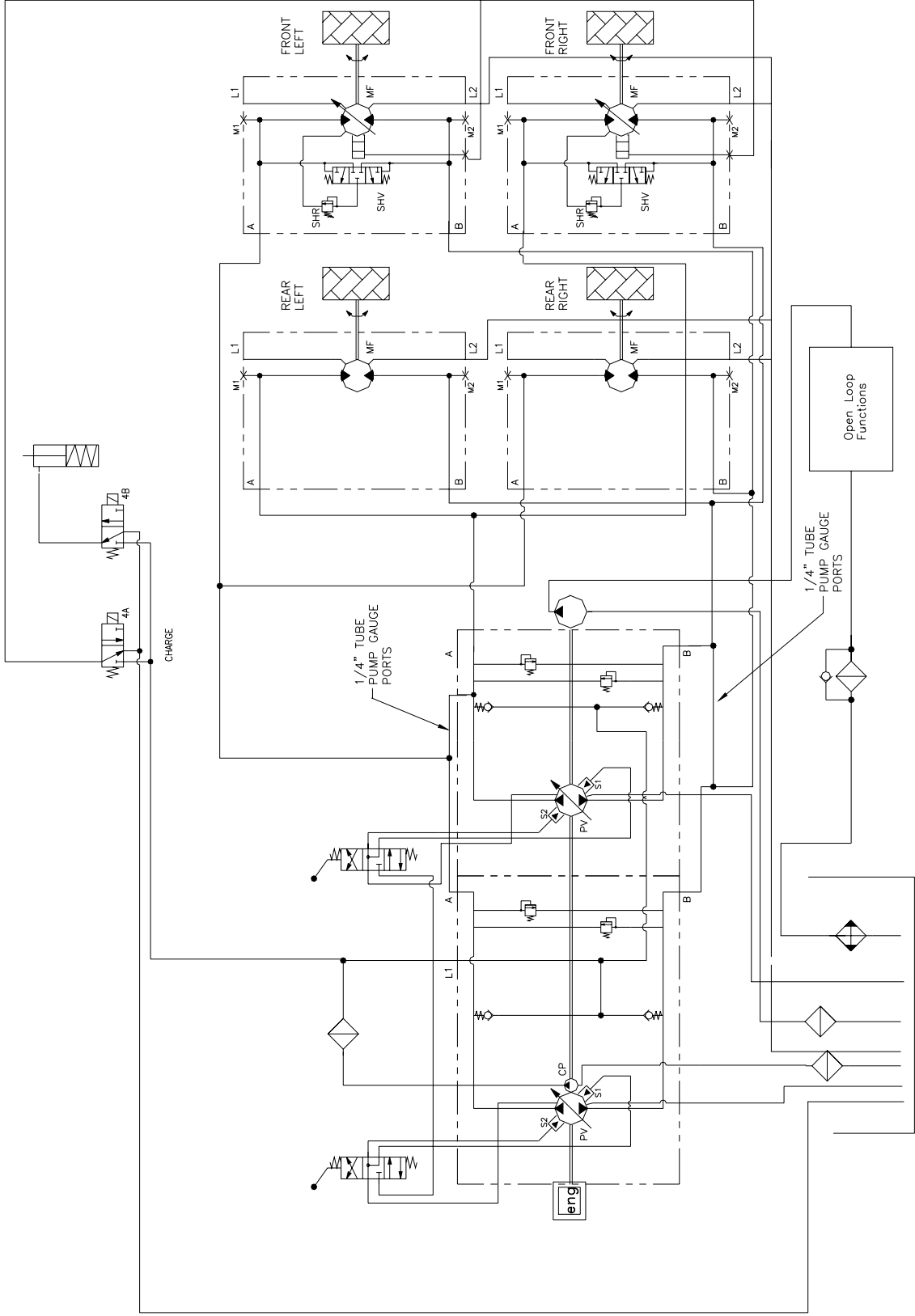
MG618-HYDRAULIC SYSTEMS

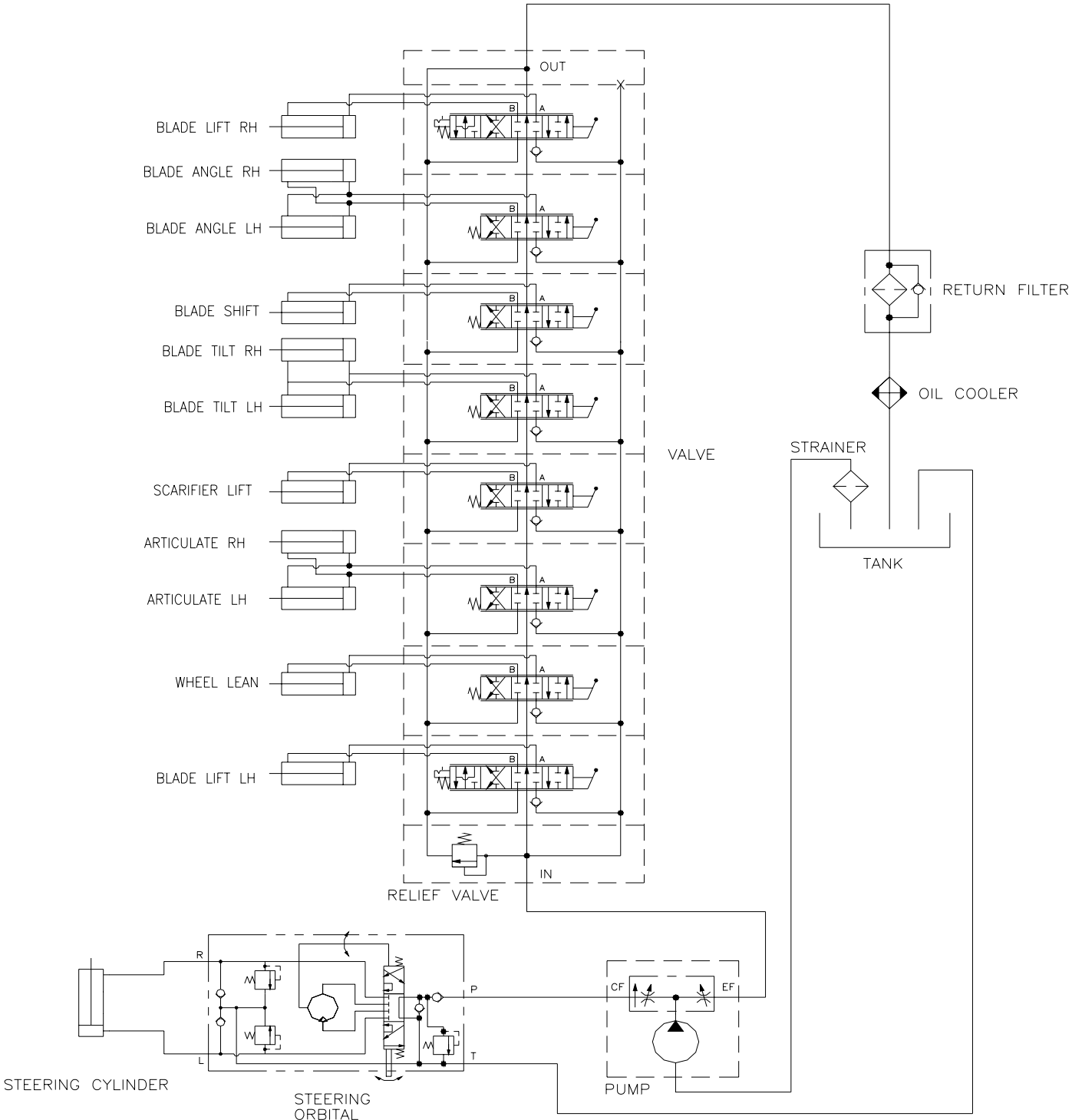
Ref. No	Part No.	Description	Qty. Req.	Ref. No	Part No.	Description	Qty. Req.
1	108571	HOSE, 12 x 44	4	19	F1337	FITTING, 90°, 8-12	2
2	108572	HOSE, 12 x 36.50	1	20	108416	FITTING, 8-10	2
3	108573	HOSE, 12 x 36.50	1	21	108417	FITTING, 90°; 8-10	2
4	108574	HOSE, 12 x 38.50	1	22	F1545	FITTING, TEE, 8-8-8	1
5	108575	HOSE, 12 x 38.50	1	23	108403	FITTING, 6-8	1
6	108576	HOSE, 12 x 72.50	4	24	108593	FITTING, TEE, 6-6-6	3
7	616228	HOSE, 08 X 69	1	25	108409	FITTING, 4-4	2
8	616230	HOSE, 08 X 90	1	26	045650	BRAKE ASSY	2
9	616227	HOSE, 08 X 48	1	27	108144	MOTOR, DRIVE, REAR	2
10	616229	HOSE, 08 X 48	1	28	108975	MOTOR, DRIVE, FRONT	2
11	108581	HOSE, 16 X 29.50	1	29	108411	90° ELBOW	6
12	F1385	REDUCER	1	30	108041	PUMP, HYD TANDEM	1
13	F1050	STR	1	31	215-0027	STRAINER, SUCTION	1
14	F1311	FITTING, 90°, 16-16	1	32	616216	HOSE 12 x 75	1
15	F1362	FITTING, 12-16	4	33	616217	HOSE 12 x 22.5	1
16	F1264	FITTING, TEE, 12-12-12	4	34	108419	TEE	1
17	F1406	FITTING, 45°; 12-12	4				
18	108593	FITTING, 90°, 12-12	4				



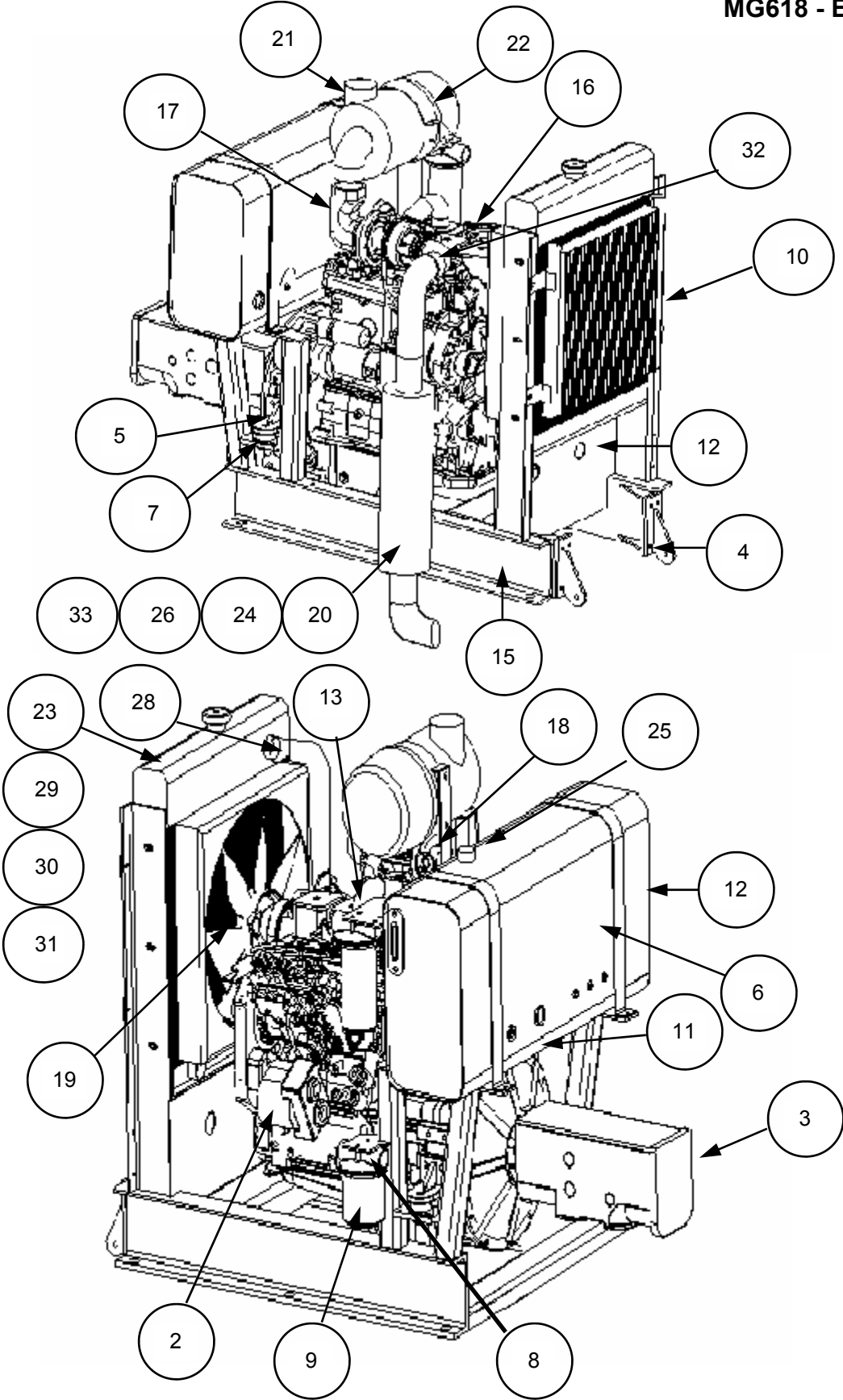
MG618-HYDRAULIC SYSTEMS

Ref. No	Part No.	Description	Qty. Req.	Ref. No	Part No.	Description	Qty. Req.
1		VALVE ASSY	1	20	616253	HOSE ASSY 08 x 52	1
2	006401	CYLINDER, BLADE LIFT	2	21	616254	HOSE ASSY 08 x 16.5	1
3	003700	CYLINDER, BLADE ANGLE	2	22	616255	HOSE ASSY 08 x 14	1
4	104886	CYLINDER, BLADE TILT	2	23	616231	HOSE ASSY 08 x 35	1
5		CYLINDER, ARTICULATE	2	24	616232	HOSE ASSY 08 x 39	1
6	007201	CYLINDER, SIDE SHIFT	1	25	616233	HOSE ASSY 08 x 55	1
7		CYLINDER, WHEEL LEAN	1	26	616234	HOSE ASSY 08 x 53	1
8		CYLINDER, SCARIFIER	1	27	616235	HOSE ASSY 08 x 24	1
8A	50100934	SEAL, KIT	1	28	616236	HOSE ASSY 08 x 15.5	1
9	616256	HOSE ASSY 08X 82	2	29	616237	HOSE ASSY 08 x 172	2
10	616257	HOSE ASSY 08 X 79	2	30	616238	HOSE ASSY 08 x 210	1
11	616240	HOSE ASSY 08 X 79 1/2	1	31	616239	HOSE ASSY 08 x 207	1
12	616241	HOSE ASSY 08 X 82	1	32	616248	HOSE ASSY 08 x 111	1
13	616244	HOSE ASSY 08X 22	1	33	616249	HOSE ASSY 08 x 122	1
14	616245	HOSE ASSY 08 X 23	1	34	108485	TEE, BULK HEAD	6
15	616246	HOSE ASSY 08 X 21	1	35		FITTING, STR 8-8	2
16	616247	HOSE ASSY 08 X 22	1	36	239200	FITTING, 45° 8-8	1
17	616250	HOSE ASSY 08 X115	1	37	238600	FITTING, 90° 8-8	18
18	616251	HOSE ASSY 08 x 118	1	38	238600	FITTING, 90° 8-8	2
19	616252	HOSE ASSY 08 x 49.5	1	39	235000	FITTING, STR 8-10	16





MG618 - ENGINE



MG618 - ENGINE

Ref. No	Part No.	Description	Qty. Req.	Ref. No	Part No.	Description	Qty. Req.
2	108040	PUMP, HYDRAULIC GEAR	1		108369	BAND, AIR CLEANER	1
3	108041	PUMP, HYDRAULIC TANDEM PISTON	1	23	108370	RADIATOR, 4BT-110	1
4	108083	WELDMENT, HOOD HINGE	2	24	108540	BRACKET, MUFFLER (M413XT)	1
5	108108	WELDMENT, MOTOR MOUNT	2	NS	108375	THROTTLE, CABLE	1
6	108110	TANK, HYDRAULIC	2	NS	108376	HYDROSTAT CABLE	1
7	108145	ENGINE MOUNT, ISOLATOR	3	NS	108378	HYDROSTAT LINKAGE	1
8	108156 108960	FILTER, RETURN FILTER HEAD FILTER (AFTER S/N: 120704)	1 1	NS	108379	CLEVIS	4
9	108157	FILTER, RETURN ELEMENT	1	NS	108521	THROTTLE LEVER	1
10	108159	OIL COOLER	1	25	108852	CAP, HYD. TANK M413XT	1
11	108160	FLYWHEEL COUPLING ASSEMBLY	1	26	108541	MUFFLER CLAMP	2
12	108170	SHEET, HYDRAULIC TANK BAND	2	27	108540	MUFFLER BRACKET CLAMP	
13	108253 HC447	FILTER, CHARGE PRESSURE FILTER HEAD, CHARGE PRES	1 1	28	108931	HOSE, TOP RADIATOR, 1.75X19.0	1
14	108283	WELDMENT, BATT. PLATE HEAT SHIELD	1	29	108932	HOSE, BOTTOM RADIATOR, 2.25	1
15	108109	WELDMENT, SKID	1	30	108854	AIR DAM, TOP	1
16	108183	ENGINE, CUMMINS 4BT-110	1	31	108853	AIR DAM, SIDE	2
17	108358	3" COBRA HEAD ELBOW	1	32	108957	90° ELBOW WITH CLAMPS	1
18	108362	RESTRICTION INDICATOR, ELECTRIC	1	33	148-2500	EXHAUST ELBOW	1
19	108363	FAN, 18" DIA BLOWER, 7 BLADE, 4B3	1	34	108921	FILTER, PRIMARY FUEL	1
20	108364	MUFFLER, 920 TO 1100 CFM	1	35	101330	FILTER, SECONDARY FUEL	1
21 21a	108368 108923	AIR CLEANER ASSEMBLY ELEMENT, AIR CLEANER	1 1	36	108922	FILTER, OIL, ENGINE	1
				37	96989	CAP, RADIATOR	1

TORQUE SPECIFICATIONS FOR STANDARD MACHINE HARDWARE

**All Torque Values are in Ft-Lbs. unless otherwise stated.
(Multiply in-Lb. value* by 0.113 or Ft-Lb. value by 1.355 to obtain metric Nm value.)**

BOLT SIZE	GRADE-2 DRY	GRADE-2 LUB	GRADE-5 DRY	GRADE-5 LUB	GRADE-8 DRY	GRADE-8 LUB
8-32	19*	14*	30*	22*	41*	31*
8-36	20*	15*	31*	23*	43*	32*
10-24	27*	21*	43*	32*	60*	45*
10-32	31*	23*	49*	36*	68*	51*
1/4-20	66*	50*	9	75*	12	9
1/4-28	76*	56*	10	86*	14	10
5/16-18	11	9	17	13	25	18
5/16-24	12	9	19	14	25	20
3/8-16	20	15	30	23	45	35
3/8-24	23	17	35	25	50	35
7/16-14	32	24	35	35	70	55
7/16-20	36	27	40	40	80	60
1/2-13	50	35	75	55	110	80
1/2-20	55	40	90	65	120	90
9/16-12	70	55	110	80	150	110
9/16-18	80	60	120	90	170	130
5/8-11	100	75	150	110	220	170
5/8-18	110	85	185	130	240	180
3/4-10	175	130	260	200	380	280
3/4-16	200	150	300	220	420	320
7/8-9	170	125	430	320	600	460
7/8-14	180	140	470	360	660	500
1-8	250	190	640	480	900	680
1-12	270	210	710	530	1000	740

*- In Lbs.

NOTE: These torque values are to be used for all INGRAM hardware excluding: Locknuts, Self-tapping Screws, Thread Forming Screws and Sheet metal Screws. Unless otherwise specified, all torque values must meet this specification.

METRIC BOLT SIZE	GRADE 8.8 DRY	GRADE 8.8 LUB	GRADE 10.9 DRY	GRADE 10.9 LUB	GRADE 12.9 DRY	GRADE 12.9 LUB
M6	8.0	6.0	11.0	8.0	13.5	10.0
M8	19.0	14.0	27.0	20.0	32.5	24.0
M10	37.0	28.0	53.0	39.0	64.5	47.5
M12	65.0	48.0	91.5	67.5	111.5	82.0
M14	103.5	76.5	145.5	108.5	175.5	131.0
M16	158.5	117.5	223.5	165.5	271.5	200.5